

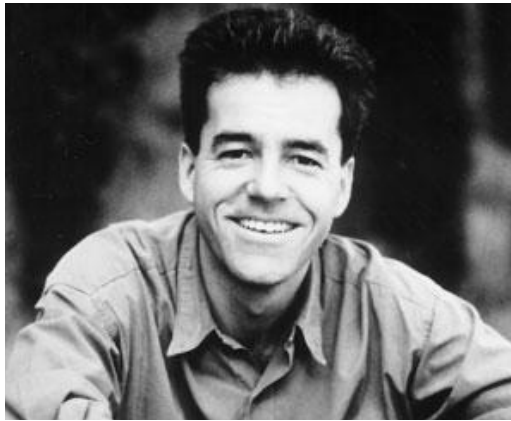
REEDS



BY
KLAUS BEGASSE

Artemide®





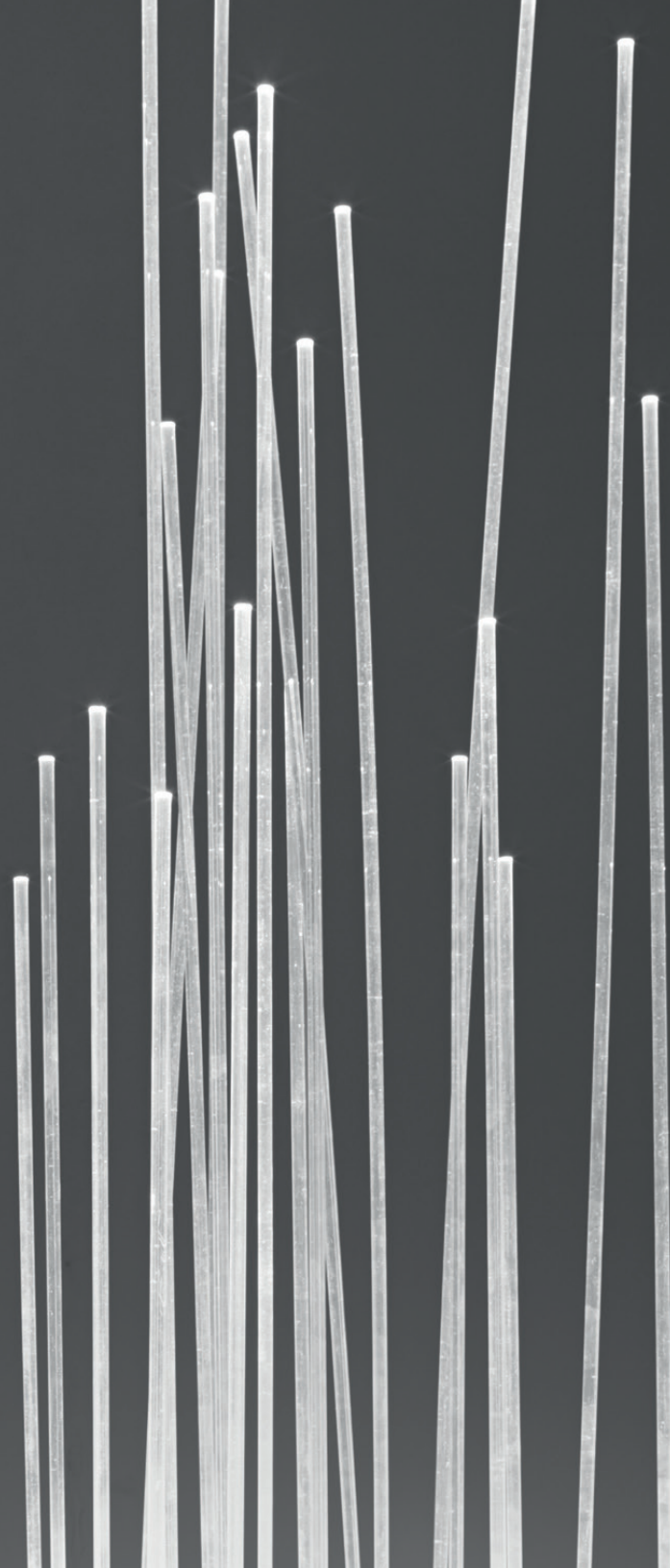
KLAUS BEGASSE

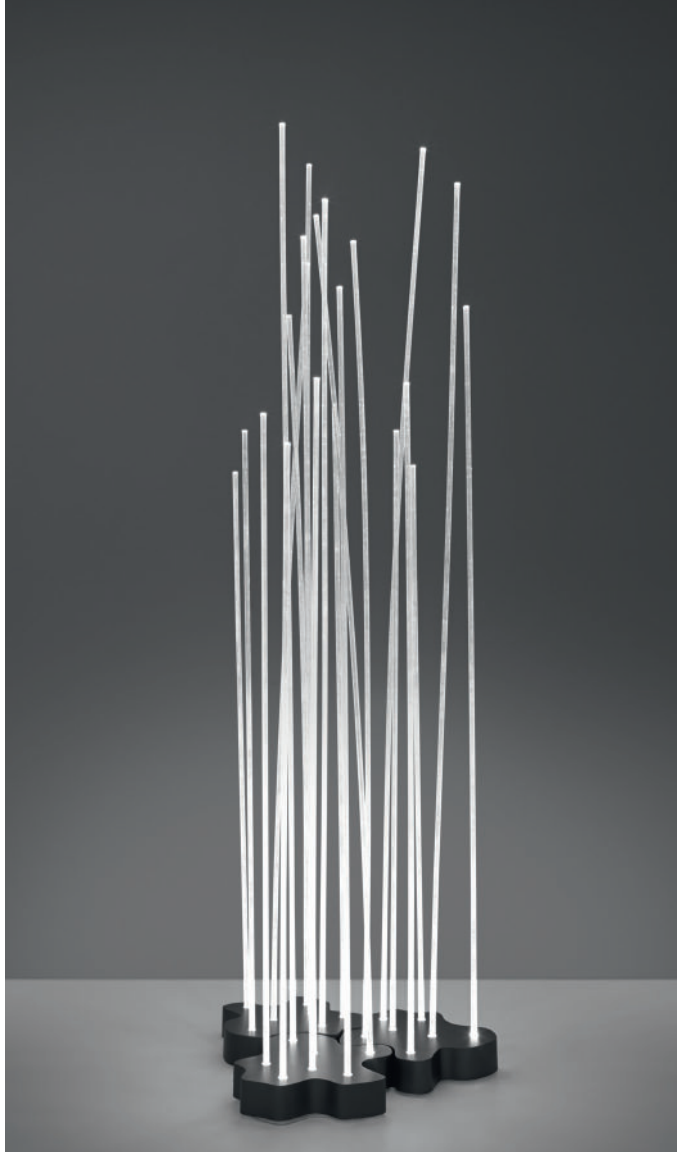
German-born designer Klaus Begasse runs a multi-disciplinary practice in Stuttgart. His organic-inspired Reeds are a modular, flexible outdoor product for Artemide.



WHIMSICAL

Originally designed by Klaus Begasse in the '60s, Reed's whimsical design inspires a modern-day fantasy. A wondrous interpretation of a unique fairy tale forest, its light architecture creates a spectacle of soft and bright light with its decorative ambience appeal whether it is made part of an interior or outdoor environment.





MODULAR

To enhance modern outdoor spaces, whether residential or hospitality exteriors, Reeds has the ability to be arranged in various patterns imagined by architects, designers, and customers to create unique exteriors.





TECHNOLOGY

Reeds' intriguing design is empowered by its 7 PMMA rods which feature high-performance LEDs that ensure environmental friendly lighting and durability.



REEDS floor

EMISSION

diffused

LIGHT SOURCE

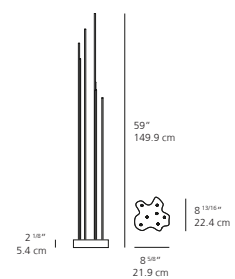
LED

9W 3000K >80 CRI

DIMMING FEATURE

on/off switch on cord

DIMENSIONS



FINISH

transparent

CERTIFICATIONS

c.UL.us listed, IP20



