

# PRESOTTO

## MADIA NECK/ NECK SIDEBOARD

design: **Pierangelo Sciuto**



### INFORMAZIONI TECNICHE

Struttura e frontali sp. 20 mm realizzati in pannelli di legno.

Per madie h.600 mm frontali battenti apertura con prensilità con gola superiore, per madie h 1124 mm frontali battenti con apertura con prensilità con gola per i frontali superiori mentre per i frontali inferiori apertura a push-pull.

Gambe con tondino in metallo.

/TECHNICAL INFO

Structure and fronts, 20-mm thk, are made from wooden chipboard panels. Hinged fronts a top grooved grid opening for sideboards h.600 mm, hinged fronts with a grooved grip opening for upper fronts and a push-pull opening for lower fronts for sideboard h.1124 mm. Metal legs.

### FINITURE

Struttura laccato opaco o essenza. I frontali possono essere in finitura laccato opaco, Metal Standard, essenza o specchio disegnato Vitrum.

Struttura laccato opaco o essenza. Gambe in Metal Standard.

/FINISHES

Structure in matt lacquered or veneer. Fronts are in matt lacquered, veneer, Metal Standard or designed Vitrum mirror finish. Legs in Metal Standard.

### DIMENSIONI

/SIZE

**madia 3 ante battenti** / 3 hinged doors sideboard

L 1858 / W 73 1/8"    P 520 / D 20 1/2"    H 600 / H 23 5/8"

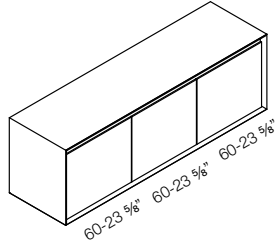
**madia 4 ante battenti** / 4 hinged doors sideboard

L 2458 / W 96 3/4"    P 520 / D 20 1/2"    H 600 / H 23 5/8"

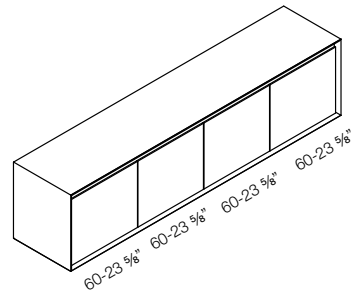
**madia 4 ante battenti** / 4 hinged doors sideboard

L 1108 / W 43 5/8"    P 520 / D 20 1/2"    H 1124 / H 44 1/4"

# PRESOTTO

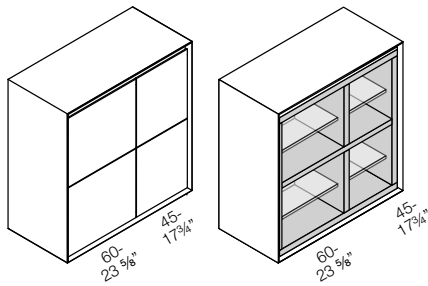


**madia 3 ante battenti**  
/ 3 hinged doors sideboard



**madia 4 ante battenti**  
/ 4 hinged doors sideboard

P



**madia 4 ante battenti**  
/ 4 hinged doors sideboard