

ARKETIPO / DIVANI-EN

# LOFT

designed by Adriano Piazzi 2003



**STRUCTURE:** varnished metal.

**SEAT PADDING:** non-deformable polyurethane of varied densities (T35; HR35-36; PK30; HD60) covered with synthetic lining.

**ARM AND BACK PADDING:** non-deformable polyurethane (PK30) covered by coupled 6mm synthetic lining.

**CUSHIONS PADDING:** cotton cover filled with mixed feathers.

**SPRINGING:** elastic belts.

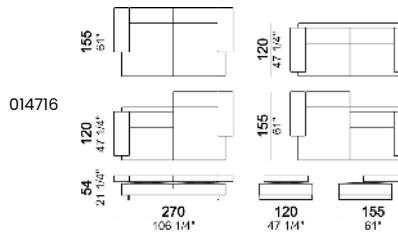
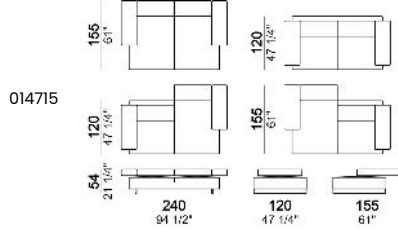
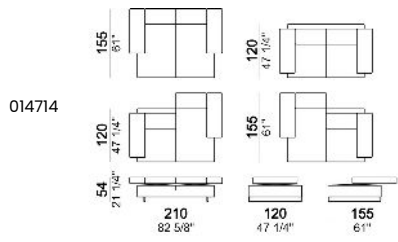
**SEAT HEIGHT:** 36 cm

**ARM HEIGHT:** 54 cm

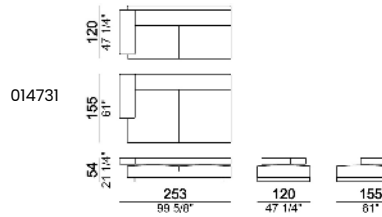
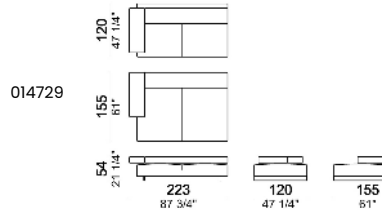
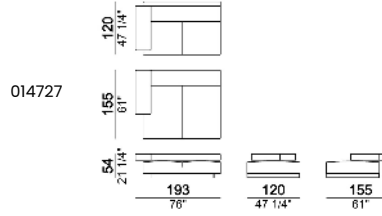
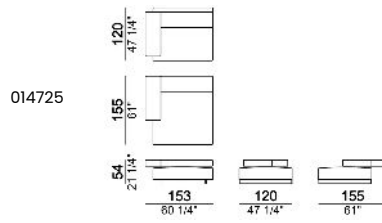
**FEET:** inox steel, h. 10 cm.

**ATTENTION:** the sectional units cannot be supplied as single elements. The version "capitonné" (quilted seat cushions) is available only in leather and eco-leather and in this case the covers are not removable. On request the units can be shipped disassembled.

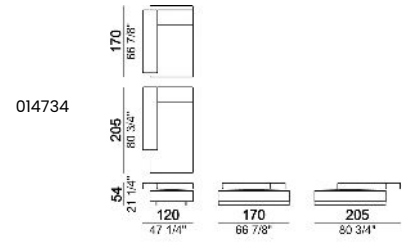
**Sofa with split independently-adjustable back**



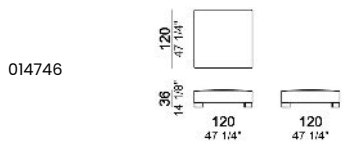
**Left or right unit**



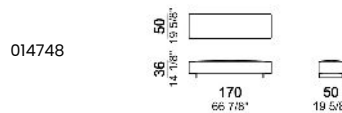
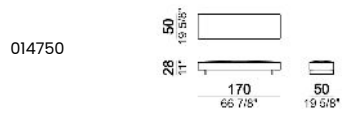
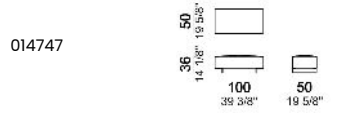
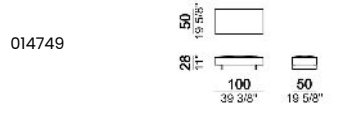
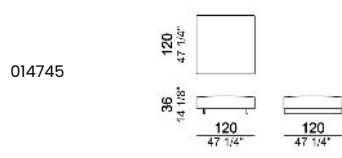
**Chaise-longue with right or left short arm**



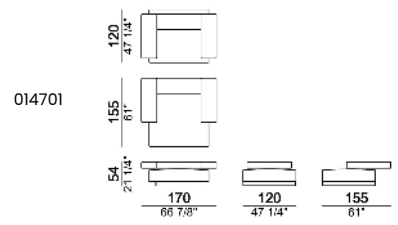
**Corner pouf.**



**Pouf**



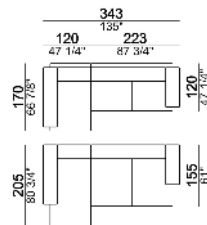
**Armchair**



**Cushion**



**Composition "A" (right unit 223 cm + chaise-longue with left short arm + 2 cushions 65x65 + 1 cushion 82x82 cm)**



**Composition "B" (right unit 193 cm + left unit 193 cm + corner pouf 120x120 cm + 2 cushions 82x82 cm + 1 cushion 65x65 cm)**

