

MODELLO: IMPERIAL RETTANGOLARE ALLUNGABILE

N.DIS.: T192\_304

DISEGNATORE: ALESSANDRONI S.



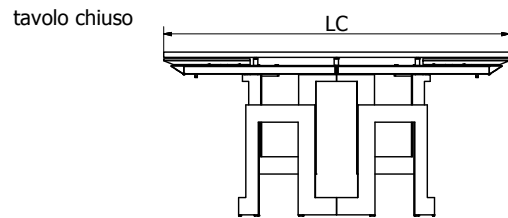
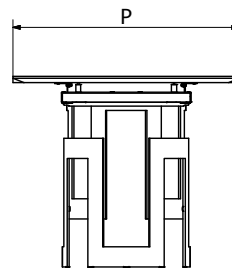
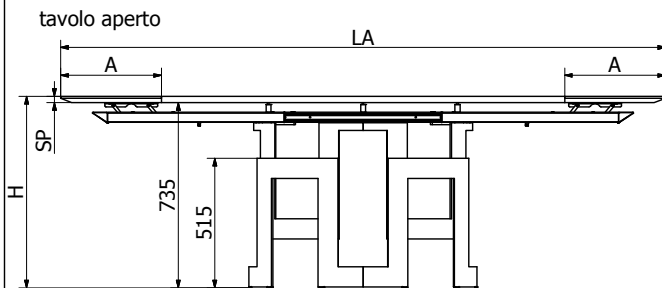
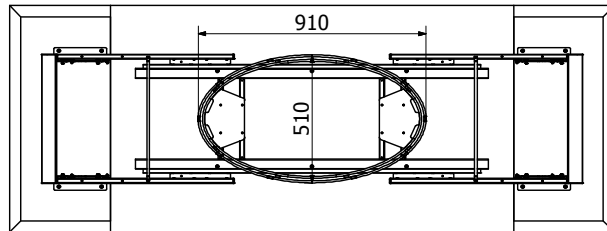
ARTICOLO: 52.70 / 52.71 / 52.72

DATA: 31/10/2018

APPROVATO UFF. TECNICO

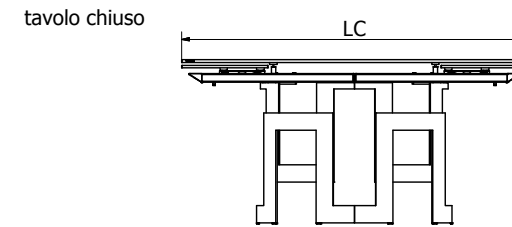
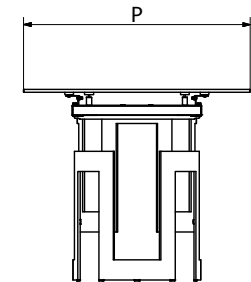
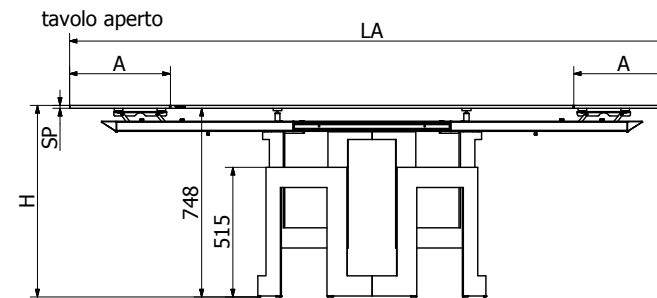
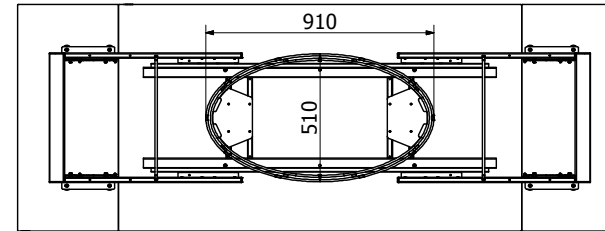
VERSIONE CON PIANO LEGNO

vista sotto - tavolo aperto



VERSIONE CON PIANO CRISTALLO COPRENTE O SUPERMARMO

vista sotto - tavolo aperto



	52.70			52.71		52.72	
LA = lunghezza piani tavolo aperto	2400			2900		2900	
LC = lunghezza piano tavolo chiuso	1600			1900		1900	
A = lunghezza piano allunga	400			500		500	
P = profondità piano	900			1000		1060	
	impiallacciato	crystallo	supermarmo sp.13/14 superceramica sp.11 supercemento sp.13	supermarmo sp.13/14 superceramica sp.11 supercemento sp.13	impiallacciato	crystallo	
SP = spessore piano	25	12	11/14	11/14	25	12	
H = altezza tot	760	760	760/763	760/763	760	760	

