

ARK SCRIVANIA

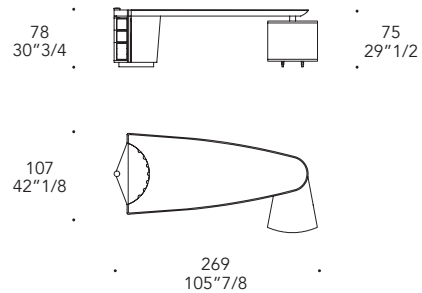
Design · Massimo Scolari



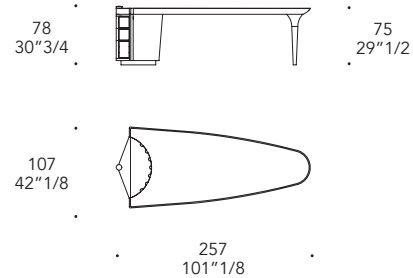
- Vano apribile in acciaio per alloggiamento prese e connessioni
- Unità con meccanismo girevole
- *Compartment in steel for plugs and connections*
- *Unit with turning mechanism*



Mod. B
with turning chest of drawer and 2 drawers unit

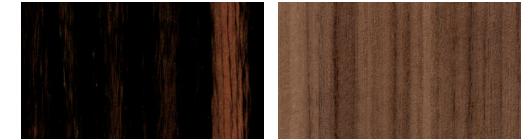


Mod. A
with Murano glass leg



STRUTTURA STRUCTURE | 1

Legno
Wood



Ebano lucido
Shiny Ebony

Noce Canaletto
Canaletto Walnut

TOP | 2

Legno
Wood



Ebano lucido
Shiny Ebony

Noce Canaletto
Canaletto Walnut

Bordo rivestito in pelle
Edge covered in leather



MATERIAL SHEET- B

Naturale

MARMOREFLEX*

Vetro Marmo
Marble glass



MATERIAL SHEET- D

LEGNOREFLEX*

Vetro Legno
Wood glass



MATERIAL SHEET- D

VANO APRIBILE PASSAGGIO CAVI OPEN CABLE ROUTING | 3

Dettagli e inserti in acciaio
Steel details and inserts

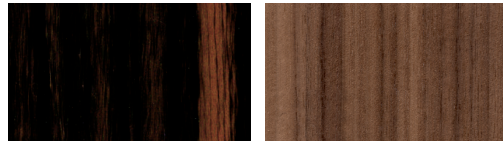


Acciaio
Steel

Mod. B

CONTENITORE UNIT | 4

Legno
Wood



Ebano lucido
Shiny Ebony

Noce Canaletto
Canaletto Walnut

FRONTALE FRONT | 5

abbinato al bordo del piano
combined to the edge of top

Pelle
Leather



Naturale

 MATERIAL SHEET- B

Mod. A

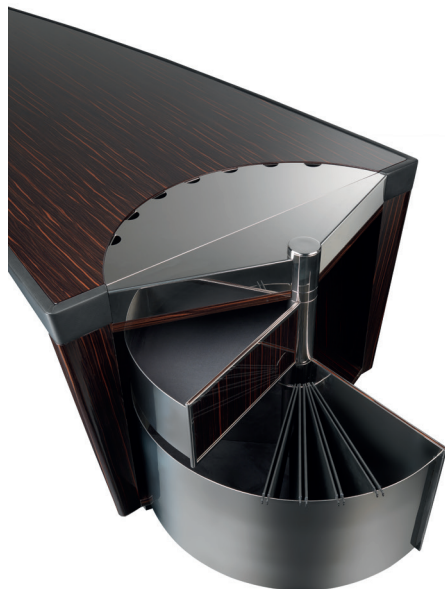
GAMBA LEG | 6

Vetro di Murano
Murano glass

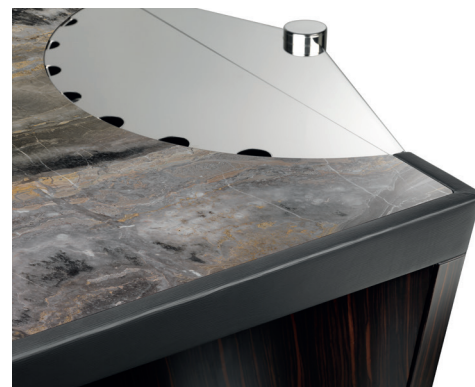


Grigio perla
Pearl Grey

Nero
Black



Dettaglio schedario e cassetto con meccanismo rotante
Drawer and filing drawer detail with turning mechanism



Dettaglio vano con sportello per prese e connettori
Compartment for plugs and connections detail



Dettaglio vano aperto per prese e connettori
Open compartment for plugs and connections detail